

FILENAME: Z:\PROJECTS\313293 - TOL - REVELLER PROJECT\07\HAH DRAWINGS\02 CAD\03 MECHANICAL\313293-HAH-01-XX-D-M-05390.DWG | PLOTTED DATE: 29 October 2025 16:08:52

THIS DRAWING IS INDICATIVE AND REPRESENTS ONLY THE DESIGN INTENT, THE CONTRACTOR MUST PRODUCE FULLY CO-ORDINATED WORKING / INSTALLATION DRAWINGS AS REFERRED TO IN THE CONTRACT DOCUMENTATION

WATER SERVICES NOTES

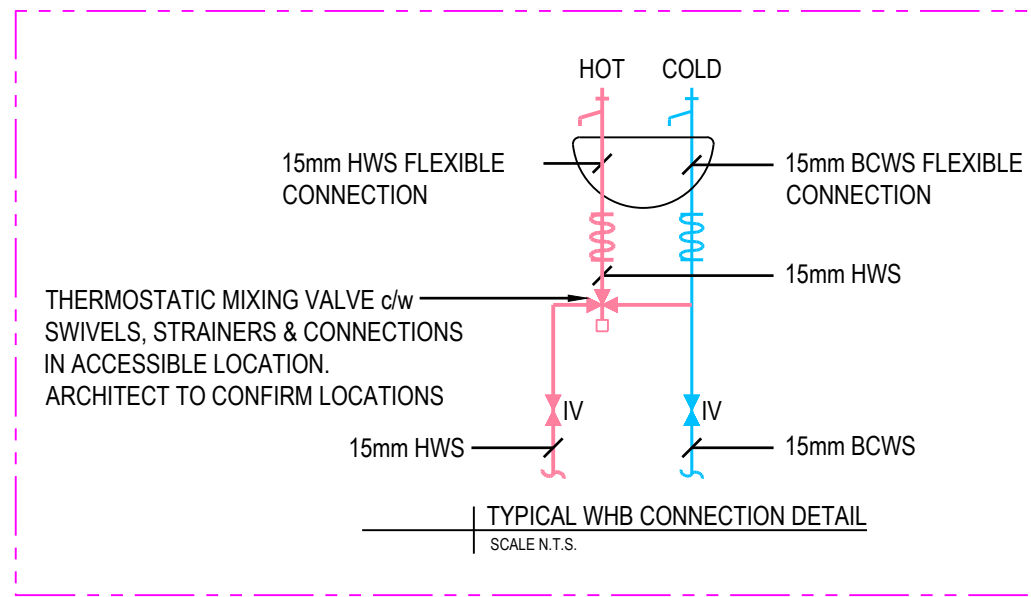
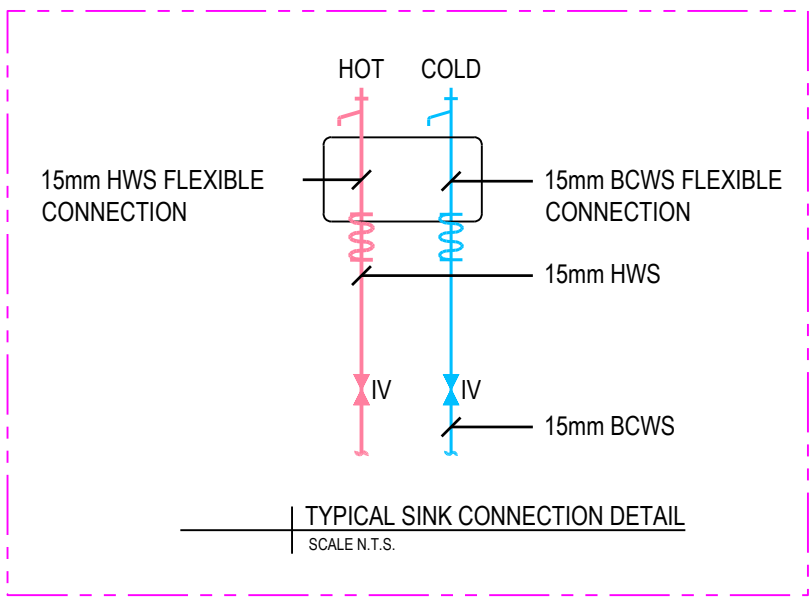
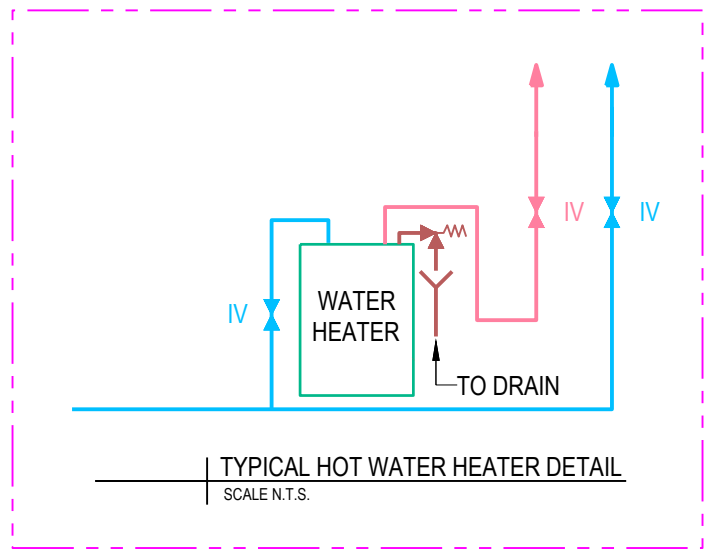
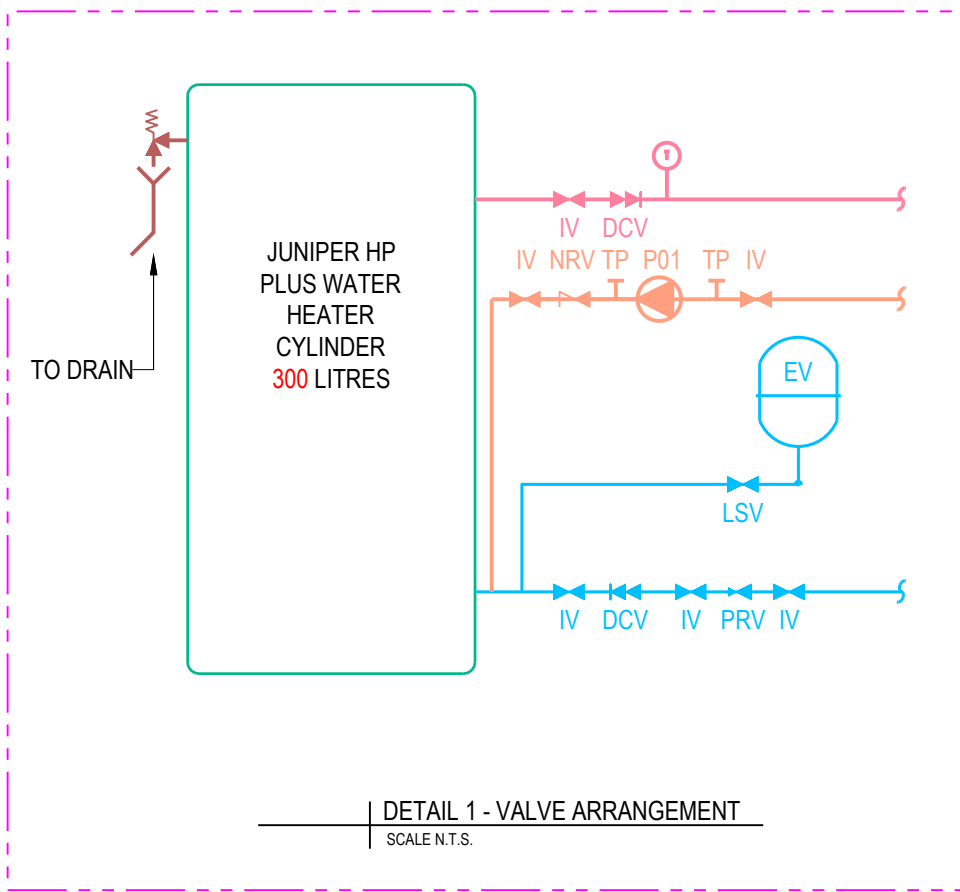
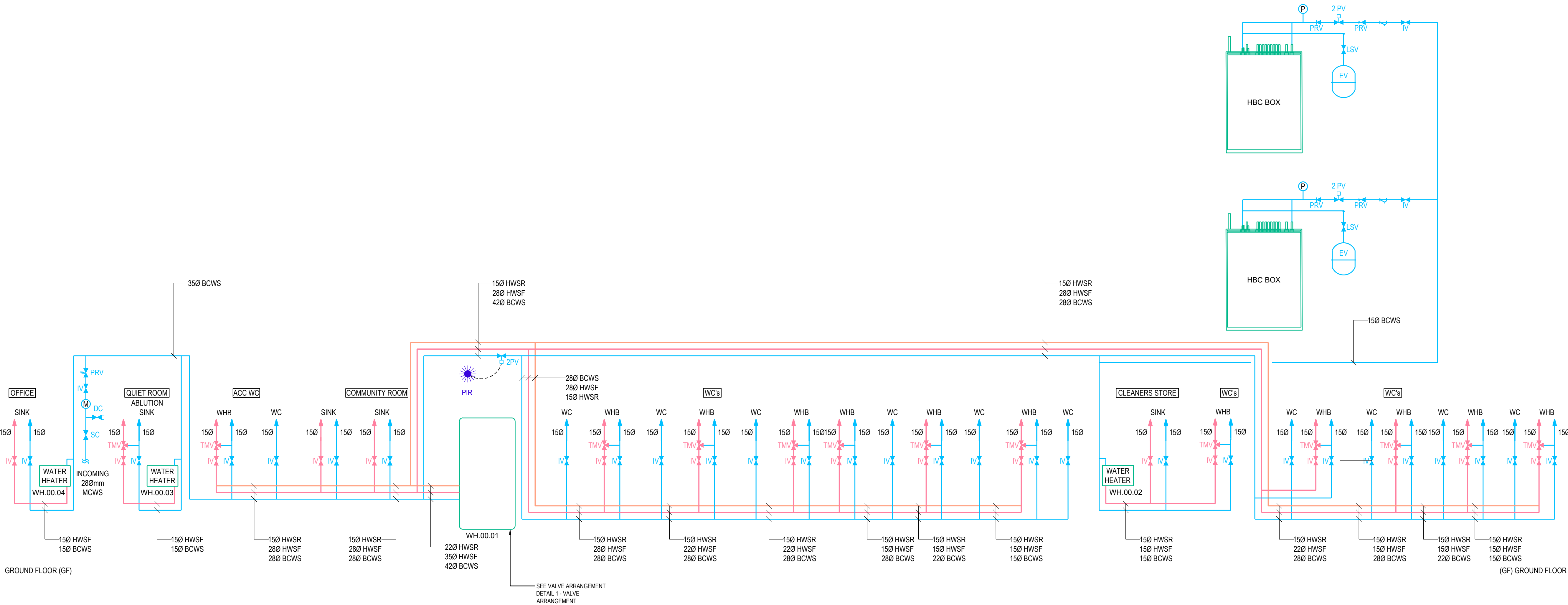
- DO NOT SCALE FROM THIS DRAWING. ALL DIMENSIONS INDICATED ARE IN MILLIMETRES
- DRAWING TO BE READ IN CONJUNCTION WITH SPECIFICATION, DOCUMENTATION, DRAWINGS & ALL RELEVANT BRITISH STANDARD DOCUMENTS
- ALL INSTALLATIONS TO COMPLY FULLY WITH CURRENT WATER BYELAWS, REQUIREMENTS OF BS 6700, BS-EN-806 AND LOCAL WATER AUTHORITIES
- ALL FITTINGS, PLANT AND EQUIPMENT TO BE INSTALLED, REGULATED AND TESTED IN ACCORDANCE WITH THE MANUFACTURERS PRINTED INSTRUCTIONS
- ALL PIPEWORK, FITTINGS AND EQUIPMENT TO BE INSTALLED TO PROVIDE SYSTEMS FREE OF AIR LOCKS, WATER HAMMER OR LEAKS
- ALL VALVES TO BE FULLY ACCESSIBLE AND BE PROVIDED WITH IDENTIFICATION LABELS
- DRAIN VALVES TO BE PROVIDED AT ALL LOW POINTS IN ALL SYSTEMS
- ALL PIPEWORK TO BE ADEQUATELY SUPPORTED THROUGHOUT ITS LENGTH
- ALL PIPES PASSING THROUGH FIRE STOP BARRIERS TO BE SLEEVED BEYOND THE BARRIER TO A MINIMUM LENGTH OF 300mm WITH BARRIER FIRE STOP MATERIAL
- ALL PIPEWORK IN CEILING VOID DUCTS AND ENCLOSURES TO BE FULLY INSULATED. PIPEWORK WITHIN FLOOR VOIDS TO HAVE ARMOURFLEX INSULATION DUE TO SPACE RESTRICTION.
- ALL SANITARYWARE TO BE FITTED WITH FLOW RESTRICTION VALVE TO COMPLY WITH CURRENT REGULATION
- EACH FLOOR BRANCH OFF TO BE FITTED WITH PRESSURE REDUCING VALVE

WATER SERVICES LEGEND

- MAINS COLD WATER SERVICE (MCWS)
- BOOSTED COLD WATER SERVICE (BCWS)
- BOOSTED SOFTENED COLD WATER SERVICE (BSWS)
- CATS COLD WATER SERVICE (CSWS)
- SOFTENED HOT WATER FLOW PIPEWORK (HWSF)
- SOFTENED HOT WATER RETURN PIPEWORK (HWSR)
- CATS HOT WATER FLOW PIPEWOR (C5HWS)
- CATS HOT WATER RETURN PIPEWOR (C5HWR)
- PIPEWORK WITHIN FLOOR VOID
- PIPEWORK AT LOW LEVEL
- PIPEWORK AT HIGH LEVEL
- PIPEWORK WITHIN CEILING VOID
- RISER REFERENCE (x DENOTES RISER NUMBER)
- PIR SENSOR

ABBREVIATIONS

- | | |
|--------|-------------------------------|
| CV | CEILING VOID |
| HL | HIGH LEVEL |
| LL | LOW LEVEL |
| DFA | DROP FROM ABOVE |
| DTB | DROP TO BELOW |
| RFB | RISE FROM BELOW |
| RTA | RISE TO ABOVE |
| L TO R | LEFT TO RIGHT / RIGHT TO LEFT |
| T TO B | TOP TO BOTTOM / BOTTOM TO TOP |
| D/W | DISH WASHER |
| G/W | GLASS WASHER |
| SHR | SHOWER |
| WHB | WASH HAND BASIN |
| WM | WASHING MACHINE |



P02	DRAFT TENDER ISSUE	ZA	JH	GWR	29.10.25
P01	STAGE 4B ISSUE	ZA	JH	GWR	18.07.25
REV	DESCRIPTION	BY	CHK	APP	DATE

Project Status:
DRAFT TENDER ISSUE



Project: 313293
**TOWER OF LONDON
REVELLER**

Drawing Title:
WATER SERVICES SCHEMATIC

Scale @ A1 1:100	Date OCT 2024	Engineer ZA
Drawing No. 313293-HAH-01-XX-D-M-05390	Revision P02	